



phil's friends
cancer is strong. hope is stronger.

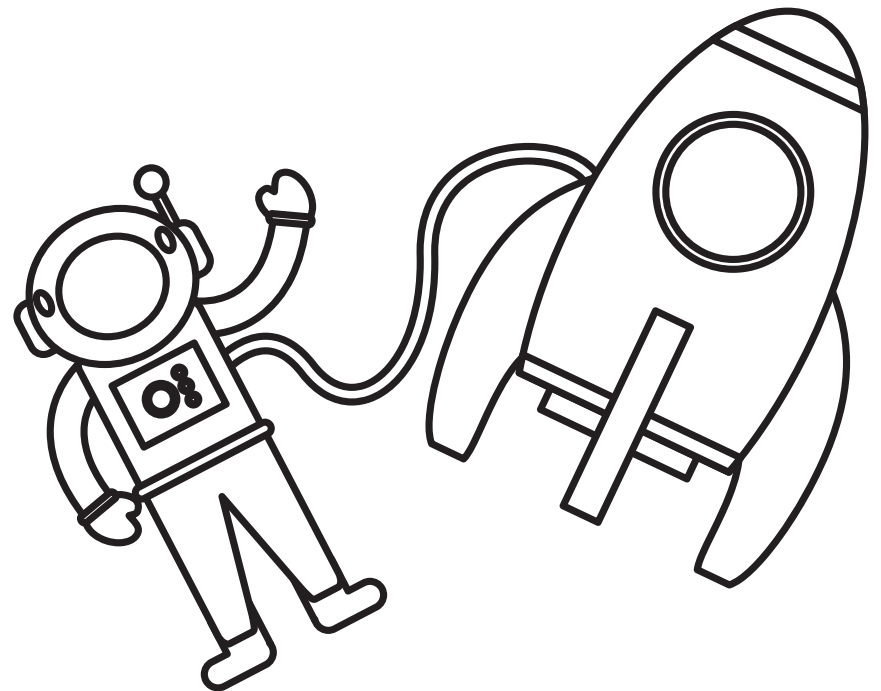
Cards of Hope

Phil's Friends is a 501c3 nonprofit organization founded by a two-time stage 4 cancer survivor. We are committed to bringing hope and support to those affected by cancer. We provide practical, emotional and spiritual support through hospital visits, care packages, prayer, and ongoing encouragement through our Cards of Hope program. Remind those you know affected by cancer that they are not alone and request a care package today.

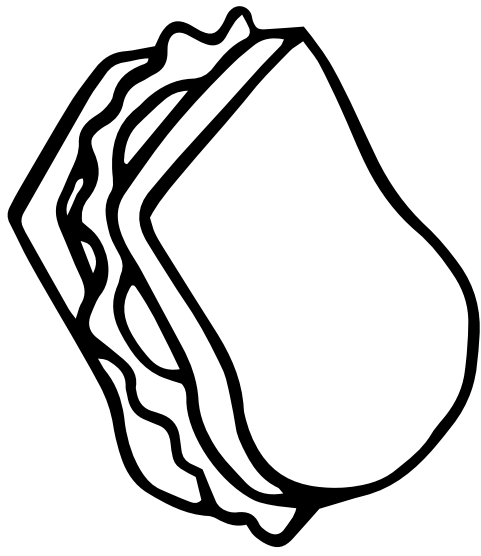
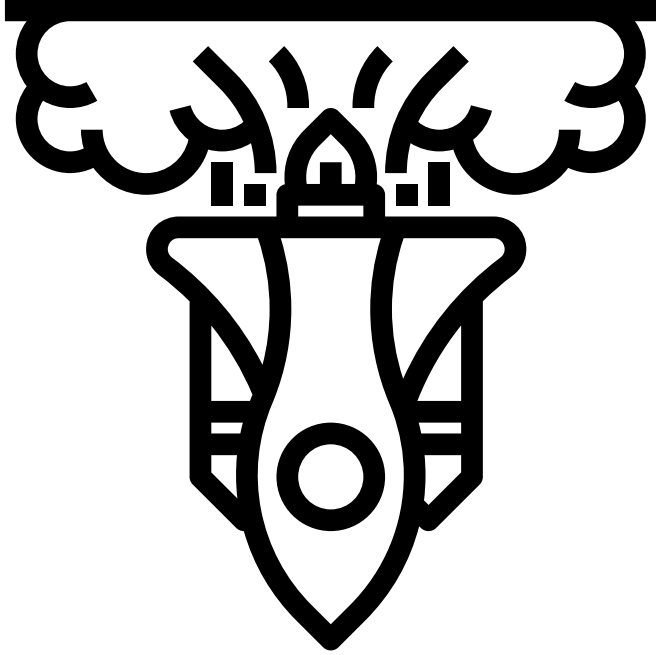
philsfriends.org



What is in an astronaut's favorite sandwich?



Launch meati



Dear Friend,

Jesus looked at them and said, "With man this is impossible, but not with God; all things are possible with God."
- Mark 10:27

Name _____

Age _____

State _____